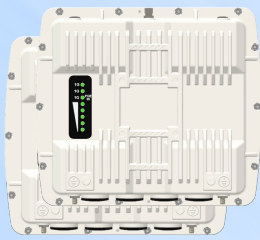


# Stratum™ X3 Quickbridge - 5GHz



## Product Snapshot

The Stratum™ X3 Quickbridge® - 5GHz is a high performance MIMO 2x2 point-to-point bridge-in-a-box solution capable of throughput up to 1Gbps. It's an ideal options for customers who require a fast and efficient setup of medium to long-range point-to-point wireless networks.

The Stratum™ X3 Quickbridge® is designed to simplify installation of point-to-point networks and includes a bundle of two preconfigured Stratum X3 endpoints that have been paired ready for service in the field.

Both connectorized and integrated antenna models are available and all models are housed in IP67-rated metal enclosures and operate from -40° to + 60°.

Other features include:

- Wide Band Radio - 5.150 – 5.850 GHz
- AES 128-bit encryption is upgradeable to 256-bit
- 20, 40 and 80 MHz channels
- Full tilt and swivel mounting kit included

## Advanced Interference Management

To achieve peak performance in challenging RF environments characterized by dense unlicensed radio usage and significant interference, the Stratum X3 – 5GHz utilizes our highly efficient WORP® (Wireless Outdoor Router Protocol). Proxim ClearConnect®, a crucial component of WORP®, provides effective interference management.

## Security

Over the air transmission is secured via 128-bit AES encryption, with an option to upgrade to 256-bit when ultra-high security is desired.

## Rugged Reliability

Stratum X3 features a robust IP67-rated metal enclosure designed to provide dependable performance over many years, even in severe conditions including strong winds, high salt exposure, and extreme temperatures.

## Proxim WORP®

WORP® is a dynamic, asynchronous protocol designed to optimize the performance of outdoor wireless point-to-point and point-to-multipoint wireless links. WORP's asynchronous nature allows the uplink and downlink to adapt to network traffic demands dynamically.

In a WORP® powered network, a base station autonomously handles on-demand bandwidth allocation and quality of service (QoS) settings based on the specific requirements of each client within the network.

### Flexible and Secure Management Options

Management options include Proxim BlueConnect™; our Bluetooth-enabled mobile management application; TLS 1.3 web GUI, SSH 2.0 CLI, and SNMP v3 for ProximVision Advanced, and other network management solutions.

### Antenna Options

The SX3-1021A Quickbridge® includes an integrated dual polarity 22dBi 10° panel antenna, with the

added flexibility of software selectable connectors for external antennas.

Model SX3-1020A Quickbridge® is a connectorized unit purpose built for external dual polarity antennas where specific antenna patterns or gain adjustments are needed.

### Ethernet and PoE

The Stratum X3 has three 1G Ethernet Ports to allow connection to multiple devices such as cameras.

- 1 x 1 Gbps port with PoE in (PD)
- 1 x 1 Gbps port with PoE out (PSE)
- 1 x 1 Gbps port.

Learn More about  
Proxim WORP®



Learn More about  
Proxim ClearConnect™



## Specifications

### PRODUCT MODELS

SX3-1021A-WD Quickbridge	Stratum X3 Quickbridge, Pair of 5 GHz All-purpose unit (BSU single or SU), 1 Gbps, 10° dual pol antenna or RP-SMA - WD PoE	PN: 907-00014
SX3-1020A-WD Quickbridge	Stratum X3 Quickbridge, Pair of 5 GHz All-purpose unit (BSU single or SU), 1 Gbps, RP-SMA - WD PoE	PN: 907-00020

### LICENSES

SX3-102xA-QB-AES256-UPG	Stratum X3 Quickbridge, 5 GHz link AES 256 license upgrade	PN: 997-00068
-------------------------	--	---------------

### INTERFACES

WIRED ETHERNET	One auto MDI-X RJ45 1 Gbps Ethernet with PoE in One auto MDI-X RJ45 1 Gbps Ethernet with PoE out One auto MDI-X RJ45 1 Gbps Ethernet
WIRELESS PROTOCOL	WORP® (Wireless Outdoor Router Protocol)

### RADIO & TX SPECS

MIMO	2x2:2
MODULATION	OFDM BPSK-QAM1024
FREQUENCY	5.150 - 5.850 GHz (Subject to Country Regulations)
CHANNEL SIZE	20, 40 and 80 MHz (80+80 and 160 MHz via future upgrade)
TX POWER	Up to 27 dBm (dual chain)
TX POWER CONTROL	0 - 24 dB, in 1 dB steps. Automatic TPC with configurable EIRP limit

	20 MHz	40 MHz	80 MHz
TX POWER	MCS0:	MCS0:	MCS0:
2 RF	27	27	27
	MCS11:	MCS11:	MCS11:
2 RF	18	18	18
RX SENSITIVITY (Per=10-6)	MCS0:	MCS0:	MCS0:
	-92	-90	-86
	MCS11:	MCS11:	MCS11:
	-61	-59	-55
Throughput - Dual Stream	223 Mbps	435 Mbps	755 Mbps
OTHER	Dynamic Channel Selection (DCS) based on interference detection		
	Dynamic Frequency Selection (DFS) based on radar signature		
	Automatic Transmit Power Control (ATPC) with EIRP limit support		

### ANTENNA

SX3-1020A

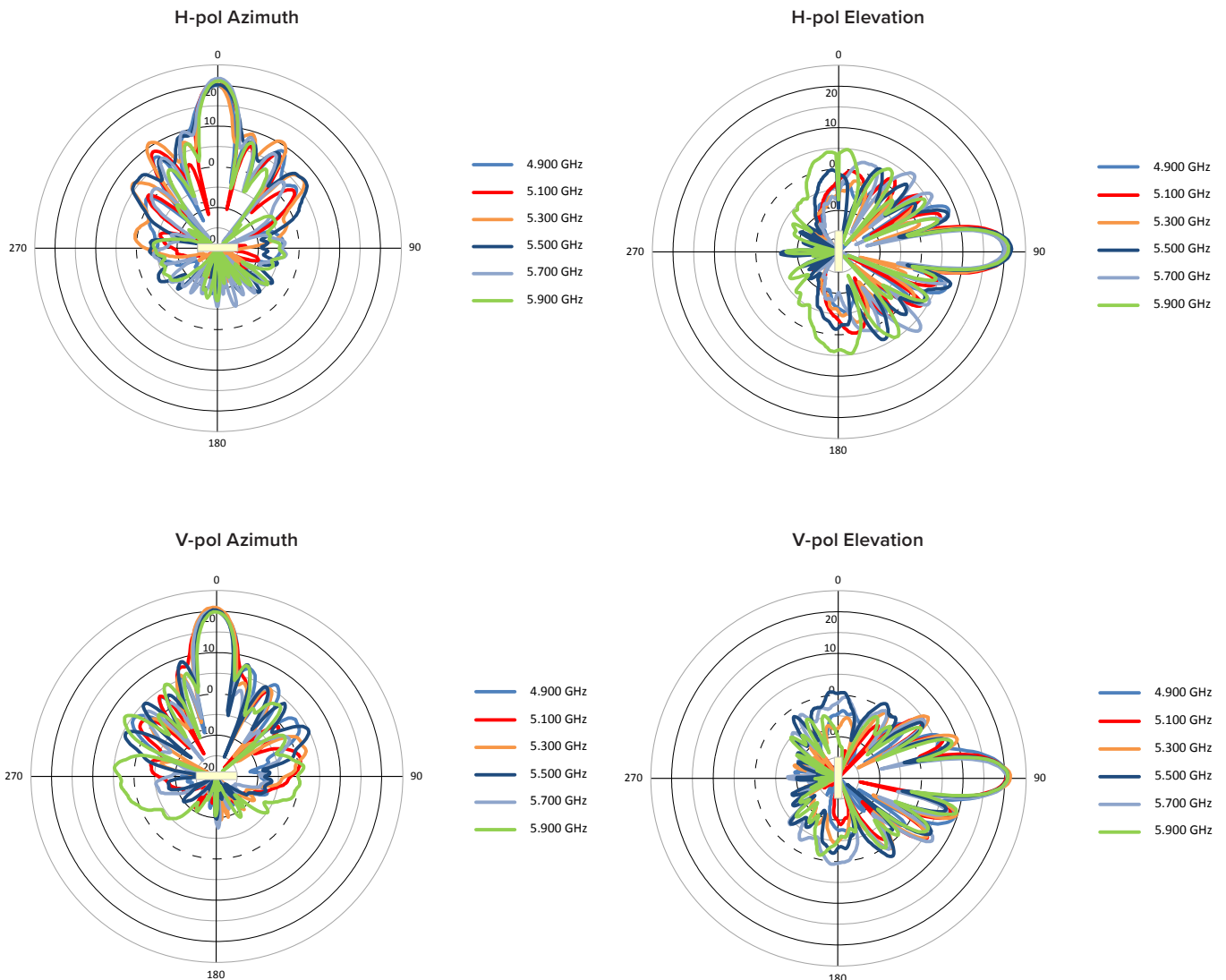
Two RP-SMA Connectors

SX3-1021A

Integrated 2x2 MIMO 22 dBi dual Polarized 10 degree Panel Antenna plus two RP-SMA Connectors  
(Software switch between integrated antenna and connectors)

### ANTENNA PATTERNS

SX3-1021A



## MANAGEMENT

BLUETOOTH LOW ENERGY	Proxim BlueConnect™
REMOTE	Telnet and SSH 2.0, Web GUI and TLS 1.3, TFTP, SNMP v1/v2c/v3
OTHER	Syslog, SNTP and local time, Spectrum analyzer
MULTI-LANGUAGE SUPPORT	Web Interface available in English, French, Spanish and Chinese

## SECURITY

ENCRYPTION	AES 128 (AES 256 via license upgrade)
AUTHENTICATION	Internal MAC Address Control List, Radius based Authentication (with VLAN and QoS provisioning)

## QoS (via future FW upgrade)

ASYMMETRIC BANDWIDTH CONTROL	Asymmetric UL/DL committed and maximum information rate per service flow
PACKET CLASSIFICATION CAPABILITIES	802.1p priority and IPTOS
SCHEDULING	Best Effort, Real Time Polling Services

## NETWORK

MODES	Bridging, Routing
IP STACK	IPv4 and IPv6 simultaneously
VLAN	802.1Q: Management VLAN. Transparent, Access, Trunk and Mixed mode. QinQ double tagging
GATEWAY FEATURES	DHCP Server & relay, NAT with Std ALGs, PPPoE end point with Proxy DNS

## POWER

802.3at compliant

## POWER CONSUMPTION

14 to 17 W max in MIMO 2x2 mode

ENVIRONMENTAL SPECS	OPERATING TEMPERATURE	STORAGE TEMPERATURE	HUMIDITY - IP RATING	WIND LOADING
	-40° to 60°C	-50° to 70°C	100% relative humidity	180 km/h (112.5 mph)
	-40° to 140° Fahrenheit	-58° to 158° Fahrenheit	IP67	
PHYSICAL SPECS	DIMENSIONS (Shipping Carton - 2 Units or 1 QB link)	DIMENSIONS UNPACKAGED	WEIGHT (Shipping Carton - 2 Units or 1 QB link)	WEIGHT (UNPACKAGED)
SX3-1020A	388 x 346 x 428 mm 15.27 x 13.62 x 16.85 in	250 x 220 x 62 mm 9.84 x 8.66 x 2.44 in	10.0 Kg 22.04 lbs	1.6 Kg 3.53 lbs
SX3-1021A	388 x 346 x 428 mm 15.27 x 13.62 x 16.85 in	305 x 305 x 77 mm 12 x 12 x 3.03 in.	12.2 Kg 26.90 lbs	2.2 kg 4.85 lbs

## SAFETY STANDARDS

IEC 62368-1:2018  
EN IEC 62368-1:2020+A11:2020  
BS EN IEC 62368-1:2020+A11:2020  
UL 62368-1:2019, CSA C22.2 No. 62368-1:19

## CERTIFICATIONS

USA	EMC/EMI: CFR47, FCC part 15, Subpart B (class A) Bluetooth: FCC Part 15 Subpart C 15.247,15.205, 15.207 & 15.209 UNII 1 and 3: FCC part 15, Subpart C 15.247, 15.205, 15.207 & 15.209, Subpart E 15.407 UNII 2A and 2C: FCC part 15, subpart E 15.407, 15.247, 15.205, 15.207 & 15.209
CANADA	EMC/EMI: ICES-003 issue 7:2020 (class A) Bluetooth: RSS-247 issue 3 & RSS Gen Issue 5 UNII 3: RSS-247 issue 3 & RSS Gen Issue 5 UNII 2A and 2C: RSS-247 issue 3 & RSS Gen Issue 5
EUROPE	EMC/EMI: EN 55032:2015+A1:2020, EN 55035:2017+A11:2020 RED: EN 301 489-1, EN 301 489-17, EN 301 489-19, EN 300 328, EN 301 893, EN 302 502, EN 303 413
UK	EMC/EMI: BS EN 55032:2015+A1:2020, BS EN 55035:2017+A11:2020 UKCA: EN 301 489-1, EN 301 489-17, EN 301 489-19, EN 300 328, EN 301 893, EN 302 502, EN 303 413

## PACKAGE CONTENTS

- One Stratum SX3-1020A unit with two RP-SMA connectors  
or One Stratum SX3-1021A with integrated antenna plus two RP-SMA connectors
- One (SX3-1020A) or Three (SX3-1021A) RP-SMA weather proofing caps
- Two M25 weather proofing cable glands
- One power injector and country specific power cord
- One full axis mounting kit
- One Grounding kit
- One Quick Installation Guide

One Stratum X3 Quickbridge package includes twice the above content. The two units are paired together into a Point to Point link.

## MTBF & WARRANTY

>450 000 hours, 2-year warranty, ServPak Extended Support available.

## ABOUT PROXIM WIRELESS :

Proxim Wireless is a global leader in advanced wireless broadband and WiFi solutions that deliver high performance and high availability communications.

Celebrating 40 years of pioneering wireless solutions, Proxim is recognized for unparalleled reliability, superior performance, and drive for innovation.

© 2025 Proxim Wireless Corporation. All rights reserved. Proxim is a registered trademark and the Proxim logo is a trademark of Proxim Wireless Corporation. All other trademarks mentioned herein are property of their respective owners. Specifications are subject to change without notice.